

Accessing Map of Medicine using the desktop icon

What is the 'Access Map of Medicine' desktop icon?

The **Access Map of Medicine** desktop icon allows you to automatically and securely access the Map of Medicine without logging in through your Athens account each time.

After you have successfully logged in to Map of Medicine once using the desktop icon, you will not have to do so again—the desktop icon will do this for you.

Can I access the Map of Medicine using the desktop icon on more than one computer?

Yes, because the desktop icon uses your individual Windows log in information to uniquely identify you as the person attempting to access the Map of Medicine and will not let anyone else use your log in information, you can install and use it on any computer that you regularly use to access the Map of Medicine, including a shared computer if you have an individual Windows log in for it.

You should not use the desktop icon with a shared or group account for Windows log in, because anyone logging in to that shared user account would be able to access your Map of Medicine account using the desktop icon.

How do I get an Athens account if I do not already have one?

If you do not already have an Athens account, go to <https://register.athensams.net/nhs/nhseng/> or select the [NHS Evidence Health Information Resources](#) link on the Map of Medicine Athens log in page. Follow the instructions to register for an Athens account.

The first time you use the desktop icon to log in to the Map of Medicine using your new Athens account, follow the on-screen directions to associate your Athens account with a new or existing Map of Medicine account. You only have to go through this process once.

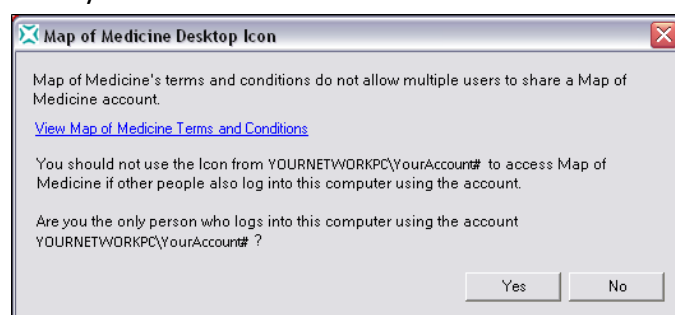
After you have associated your new Athens account with the Map of Medicine, you can use the desktop icon to access the Map of Medicine without logging in each time.

How do I log in to the Map of Medicine for the first time using the desktop icon and my existing Athens account?

1. Double-click the **Access Map of Medicine** desktop icon on your computer.



A dialog box appears asking you to confirm that you are using the Map of Medicine desktop icon from your individual Windows account.



! If you access the **Terms and Conditions** page by clicking **View Map of Medicine Terms and Conditions** from the dialog box, do not select **Back to Login** on that page. Close the page and return to the dialog box.

2. If you are using your individual Windows account, click **Yes**; otherwise click **No**. If you selected **Yes**, your default web browser opens to the Map of Medicine **Terms and Conditions** page.
3. Read the terms and conditions, then click **Accept**. The Map of Medicine **Login via Athens** page appears.
4. Click **Login via Athens**. The Athens Login page appears.
5. Type your Athens username and password.
6. Click **Login**. The Map of Medicine home page appears.
7. Use the Map of Medicine through your account.

If you selected **Yes** in the dialog box, you will not have to repeat the Athens log in procedure again to access the Map of Medicine. The next time you use the desktop icon, the Map of Medicine will automatically open in your web browser.

Accessing Map of Medicine using the desktop icon

How do I use the desktop icon to access the Map of Medicine after I have successfully logged in once using my Athens account?

1. Double-click the **Access Map of Medicine** desktop icon on your computer.



Your default web browser opens to the Map of Medicine home page.

2. Use the Map of Medicine through your account.

What do I do if I am automatically logged out of Map of Medicine after a period of inactivity?

If you use the desktop icon to log in to the Map of Medicine, then do not use the application for 4 hours, you will be automatically logged out. This is expected behaviour for your Map of Medicine application.

1. To log back in to the Map of Medicine, either:
 - a. close your web browser (if you do not have other applications running in it)
 - b. close the web browser tab where the Map of Medicine was running (if you want to keep your web browser open)
3. Double-click the **Access Map of Medicine** desktop icon on your computer.



Your default web browser opens to the Map of Medicine home page.

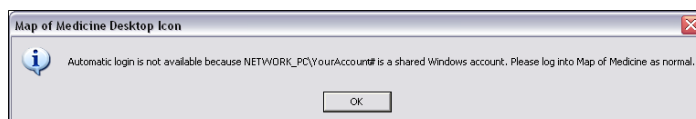
4. Use the Map of Medicine through your account as normal.

How do I log out of Map of Medicine when I used the desktop icon to log in? There is no Log out link.

To log out of the Map of Medicine, close your web browser. This automatically ends your Map of Medicine user session.

What happens if I try to use the Map of Medicine desktop icon on a computer that has a shared Windows account?

You will see the following message:



Since you cannot link a shared Windows account to your personal Map of Medicine account, you will need to log in manually to access the Map of Medicine on that computer:

1. Click **OK**.
Your default web browser opens to the Map of Medicine **Log in** page.
2. Click **Login via Athens**.
The Athens Login page appears.
3. Type your Athens username and password.
4. Click **Login**.
The Map of Medicine home page appears.
5. Use the Map of Medicine through your account.

What if I experience problems accessing the Map of Medicine using the desktop icon?

Contact your local IT help desk if you experience any problems accessing the Map of Medicine using the desktop icon.

Make sure to tell your IT help desk about any error messages that you see when you try to access the Map of Medicine using the desktop icon.